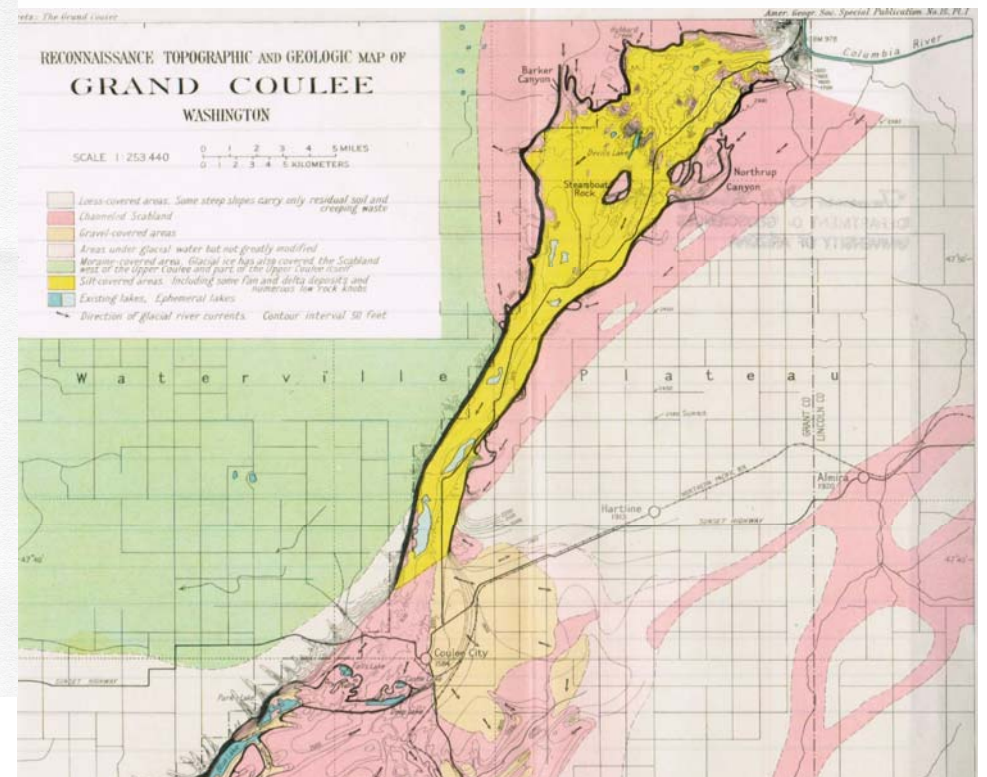
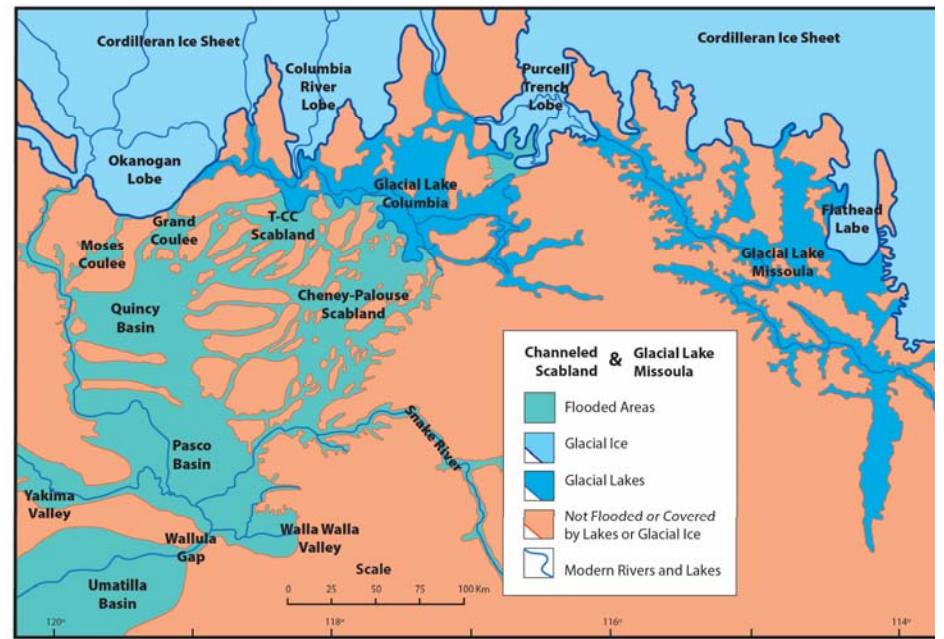
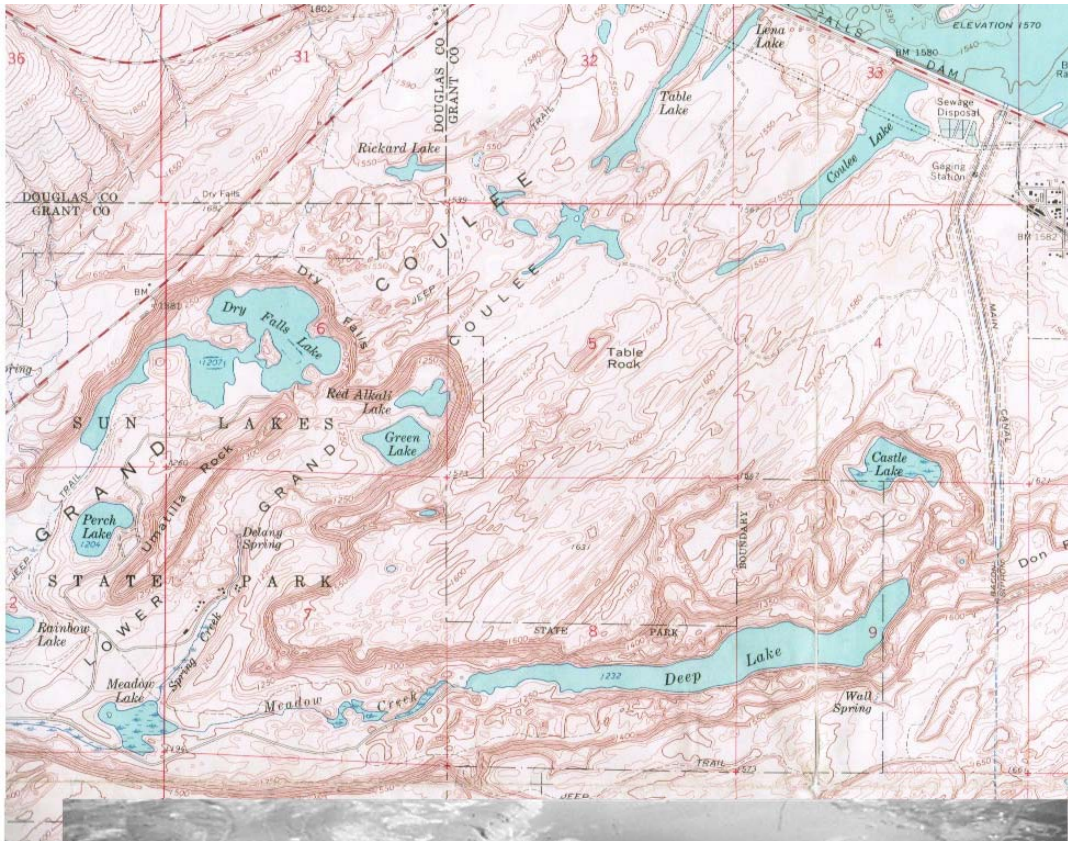


GEOLOGIC MAP OF GRAND COULEE, WASHINGTON

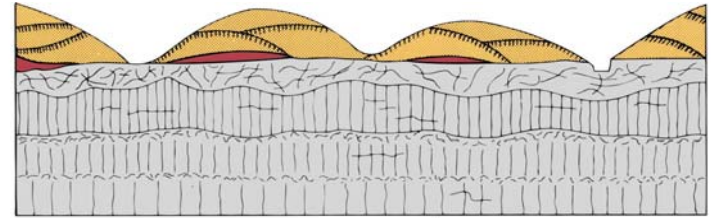
Bretz (1959) ↑

Bretz (1932)

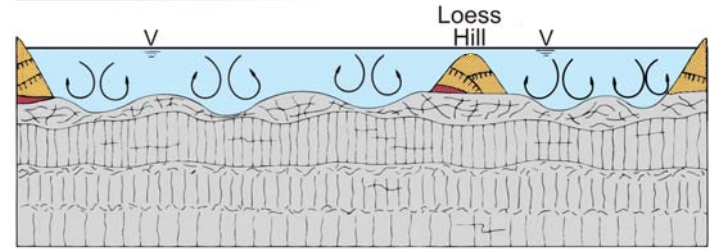




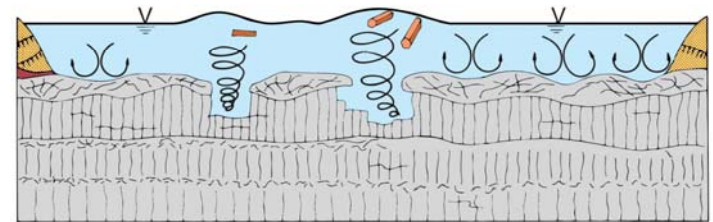
**I**



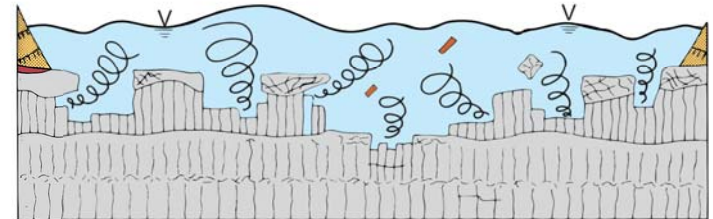
**II**



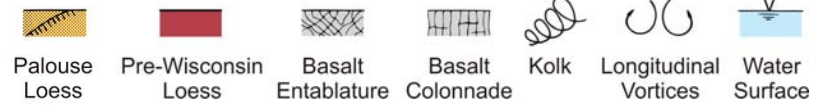
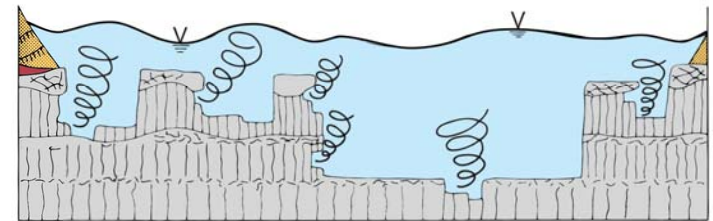
**III**



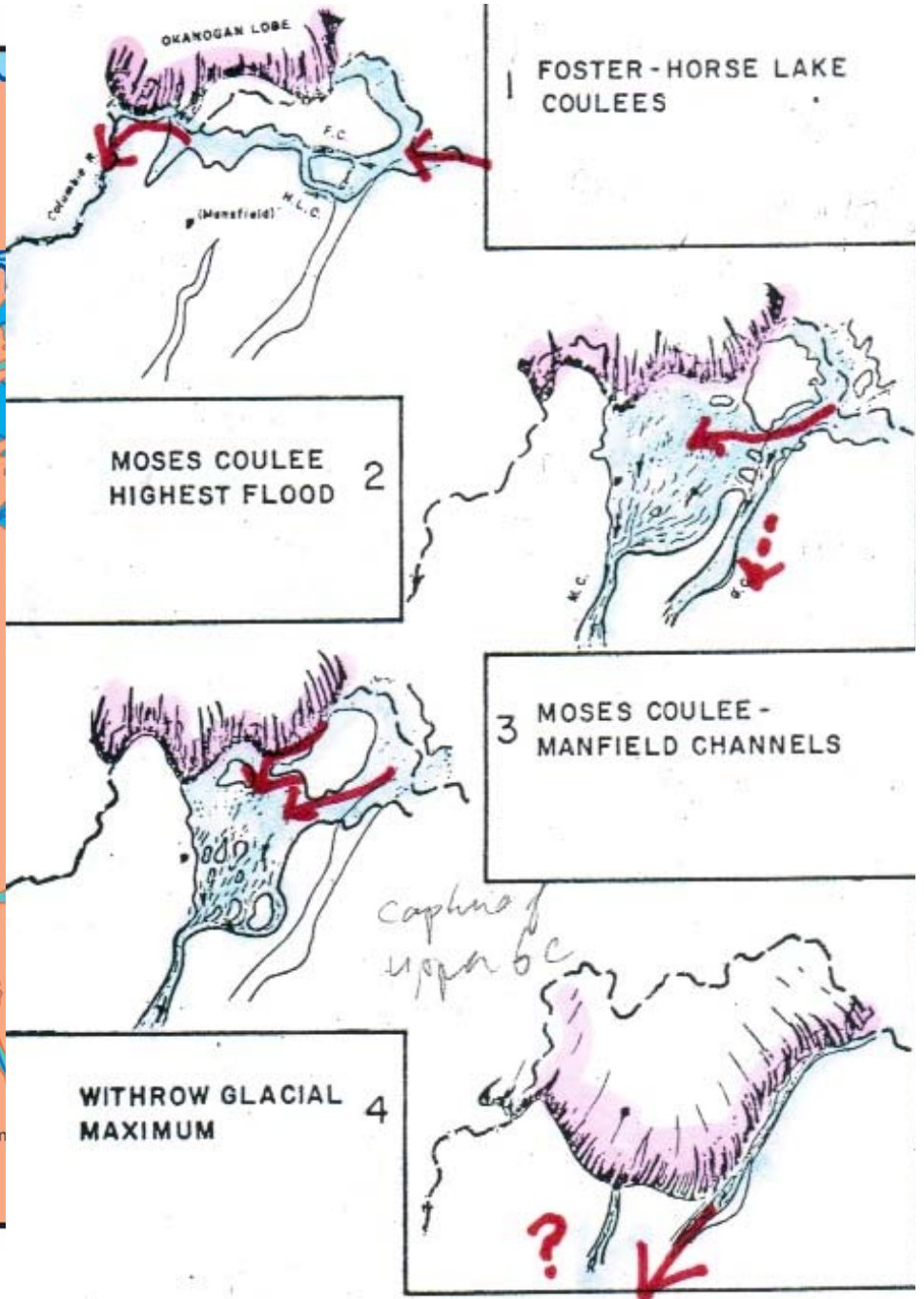
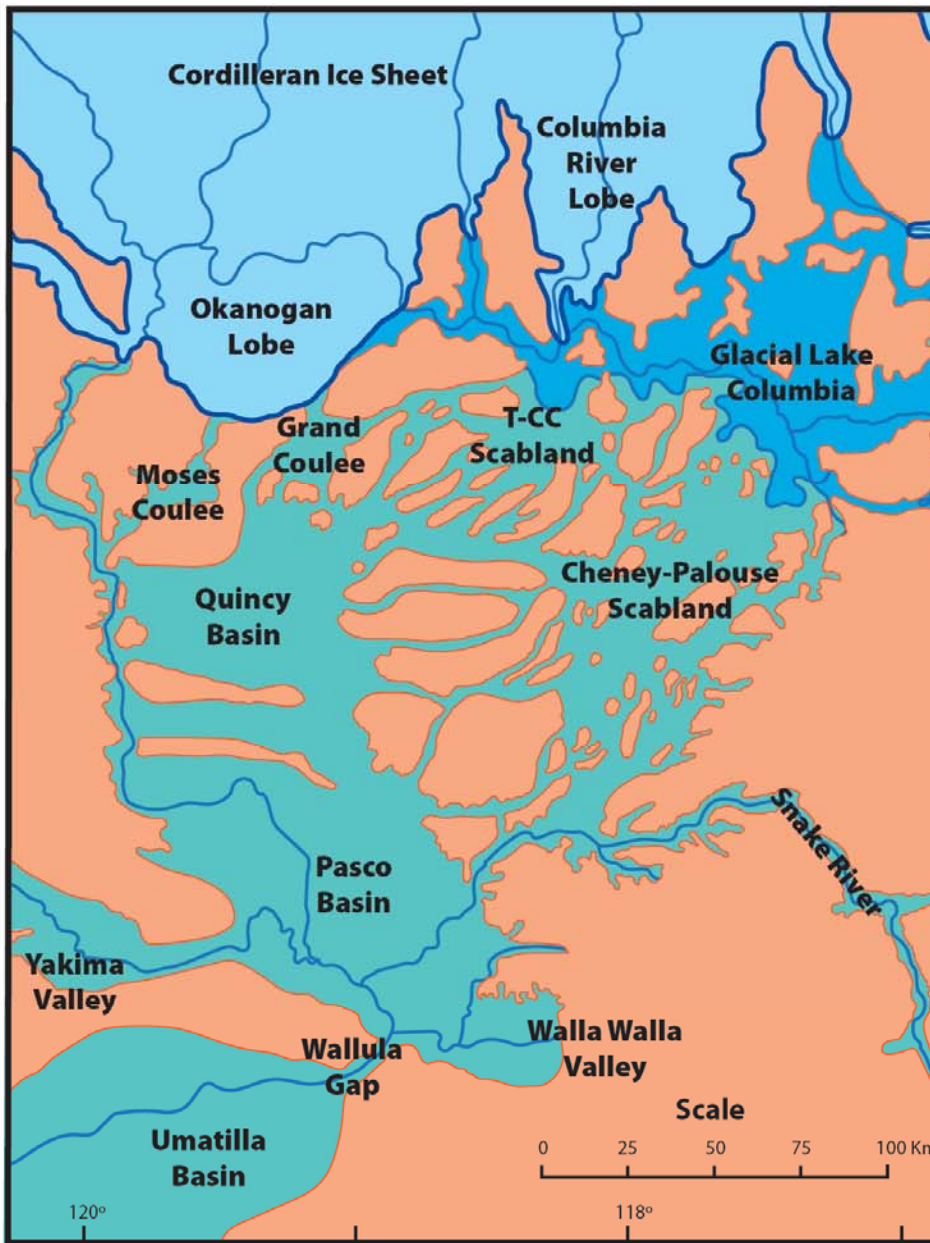
**IV**



**V**



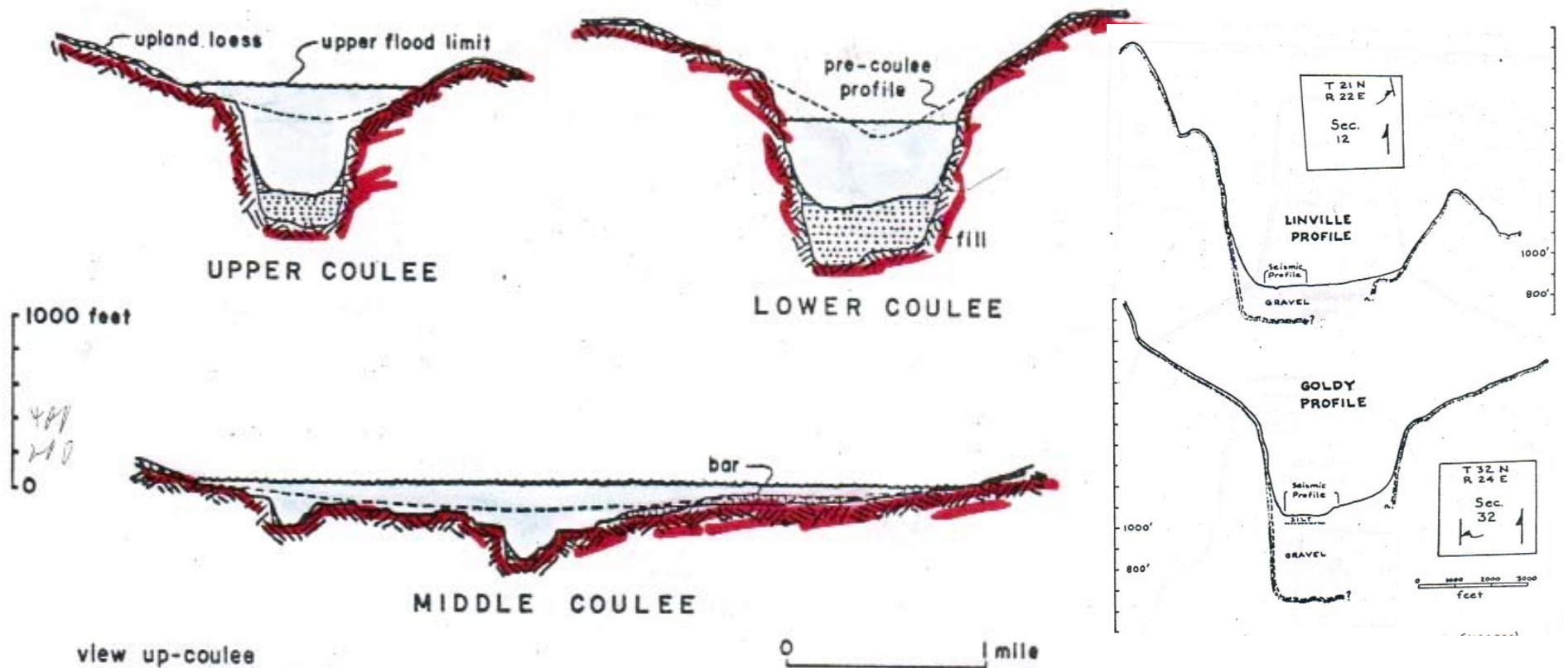
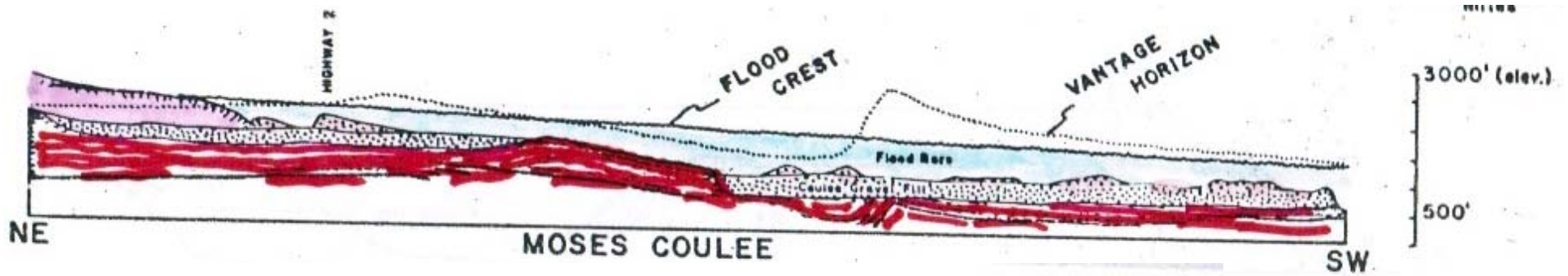
Baker, V.R., 2009, The Channeled Scabland—A retrospective: Annual Reviews Earth and Planetary Sciences, v. 37, p. 6.1-6.19.



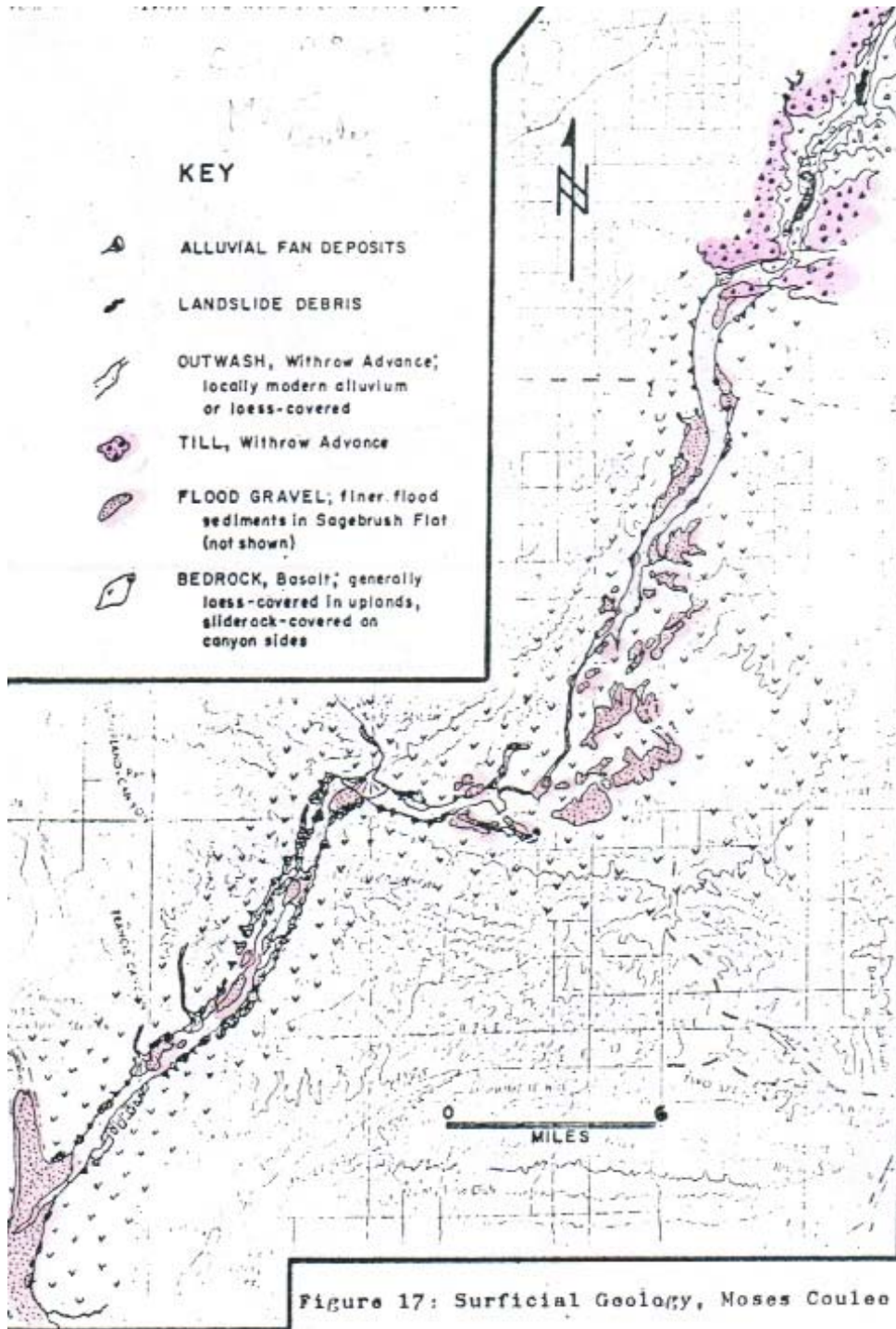
Hanson, L.G, 1970, The Origin and Development of Moses Coulee and Other Scabland Features on the Waterville Plateau, Washington: Ph.D. Dissertation, University of Washington, 140 pages.



Figure 20: Sequence of Flood Events, Waterville Plateau



Hanson, L.G, 1970, The Origin and Development of Moses Coulee and Other Scabland Features on the Waterville Plateau, Washington: Ph.D. Dissertation, University of Washington, 140 pages.



← Hanson, L.G, 1970, The Origin and Development of Moses Coulee and Other Scabland Features on the Waterville Plateau, Washington: Ph.D. Dissertation, University of Washington, 140 pages.

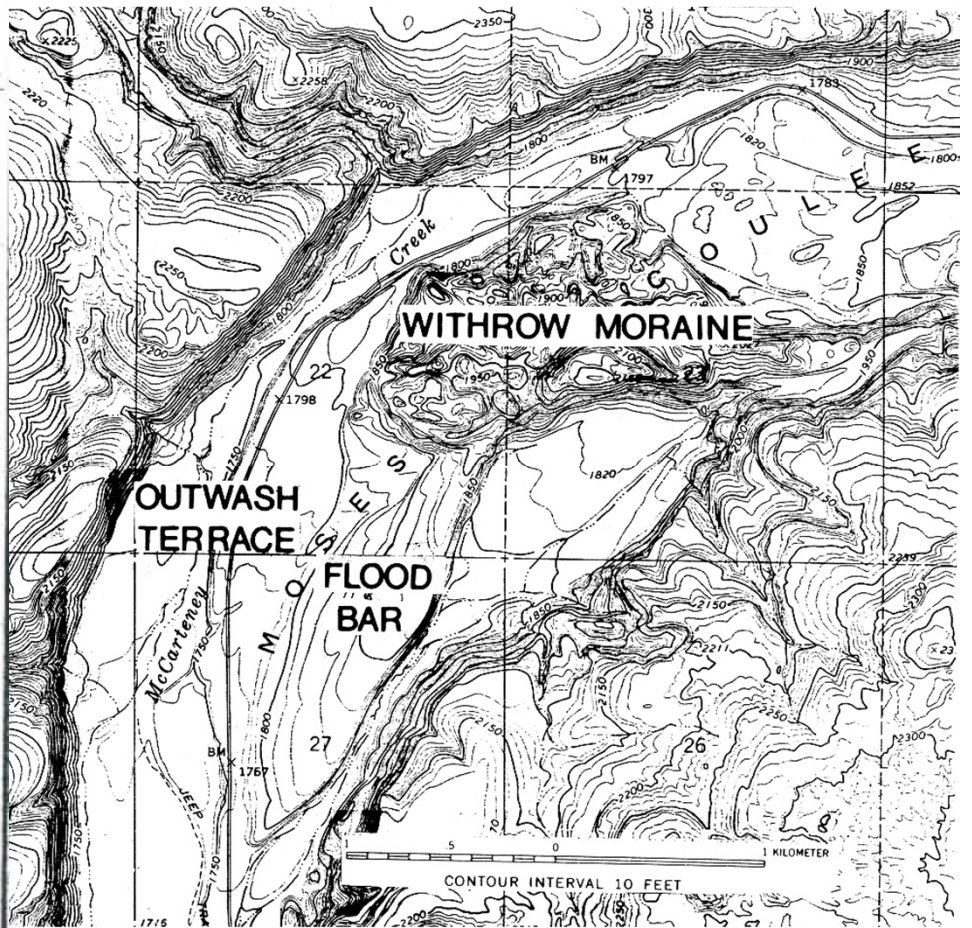


Figure 17: Surficial Geology, Moses Coulee

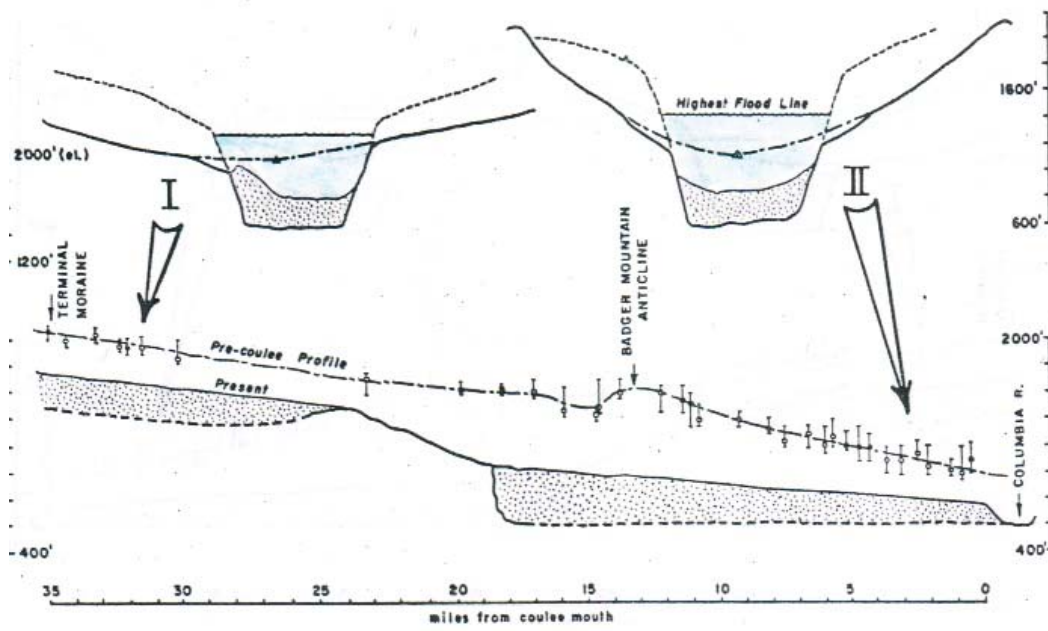
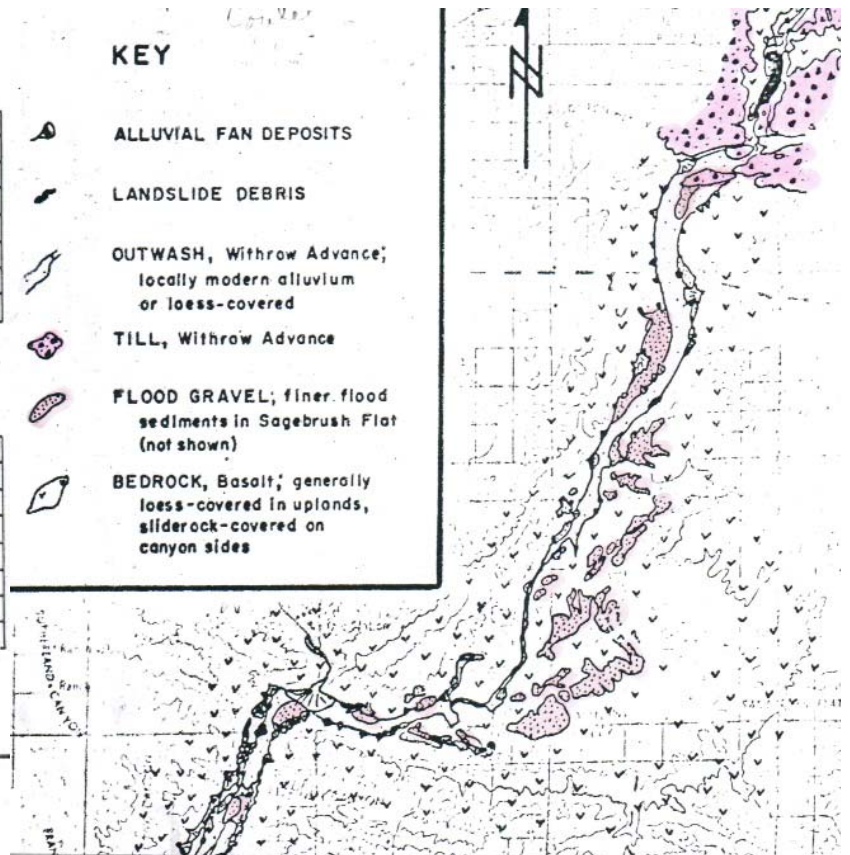


Figure 15: Pre-Moses Coulee Drainage Line; Reconstructions



Hanson, L.G, 1970, The Origin and Development of Moses Coulee and Other Scabland Features on the Waterville Plateau, Washington: Ph.D. Dissertation, University of Washington, 140 pages.

